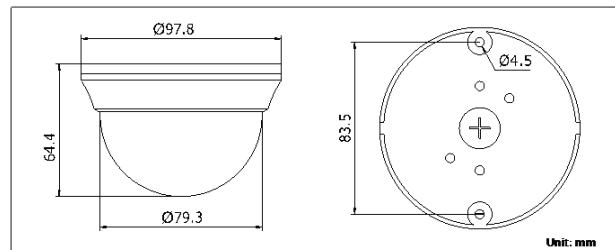




DS-2CC5102N

- Compact Design
- SONY Super HAD CCD II
- Day/Night with auto switch
- Auto white balance, auto gain control, electronic shutter control and backlight compensation
- Internal Synchronization
- 3-axis (pan/tilt/rotation) positioning allows adjustment for optimum camera rotation and placement

Unit: mm



Specifications

		DS-2CC5102N	
Camera	Image Sensor	1/3" SONY Super HAD CCD II	
	Signal System	NTSC	
	Effective Pixels	NTSC: 510 (H) x 492 (V)	
	Min. Illumination	0.28 Lux @ (F2.0, AGC ON)	
	Shutter Time	NTSC: 1/60 s to 1/100,000 s	
	Lens	3.6mm @ F2.0 Angle of views: 78°	
	Lens Mount	M12	
	Angle Adjustment	Pan: 0-355°, Tile: 0-80°, Rotation 0-355°	
	Day & Night	Electronic	
	Horizontal Resolution	420 TVL	
	Synchronization	Internal synchronization	
	Video Output	1Vp-p composite output (75 Ω/BNC); Test monitor out [1Vp-p composite output (75 Ω/BNC), device line]	
S/N Ratio	More than 50dB		
General	Operating Conditions	-10 °C-60°C (14 °F-140 °F) Humidity 90% or less (noncondensing)	
	Power Supply	12 V DC ± 10%	
	Power Consumption	Max. 2 W	
	Dimension	Ø 97.8x 64.4 mm (Ø 3.85" x 2.54")	
	Weight	300 g (0.66 lbs)	

Order Model

DS-2CC5102N